

## Standoffs Circuit Board Standoffs Spacers



Standoffs and spacers are fasteners used to connect, position and raise panels and PCB assemblies above other electronic components. Standoffs have a round or hexagonal shape with ends that are either internally threaded (female) or externally threaded (male). Spacers are cylindrical or hexagonal with an unthreaded interior that allows the entire bolt to pass through the center. Cylindrical standoffs and spacers can be easily tightened by hand and hexagonal standoffs are designed to be tightened with a wrench.

*Custom Standoffs and Spacers Available in Various Lengths and Sizes, and in Materials Including:*

- # **Brass** : corrosion-resistant, conductive, non-magnetic
- # **Steel** : exceptional strength and durability
- # **Stainless Steel** : resists chemicals and corrosion, high strength-to-weight ratio
- # **Aluminum** : strong, lightweight, noncorrosive, non-magnetic, temperature resistance



Captive Panel Retainer



Captive Panel Retainer



Washer Face Thumb  
Screws



Push Thumb Screws



Male Ball Studs



Female Ball Studs



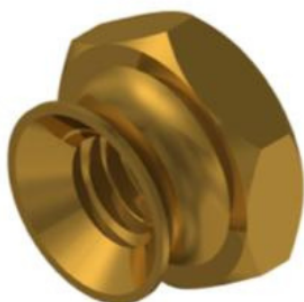
Captive Panel Screw



Captive Panel Screw



Captive Panel Screw



Thumb Nut



Plain Thumb Screw



Hex, Round Square Standoffs



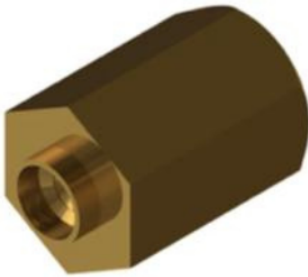
Female-Female  
Standoffs



Male-Female  
Standoffs



Male-Male  
Standoffs



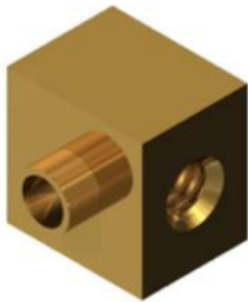
Swage Standoffs



Spacers



Super Torq  
Swage Standoffs



Chassis Fasteners



Jack Screws



Jack Screw Assembly Kits



Precision Shoulder Screw



Captive Panel Screw



Precision Shoulder Screw - Slotted



## TAPPING STANDOFF

Tapping standoff, Self-tapping standoff screw, Male-female hex spacer, PCB spacer, PCB support



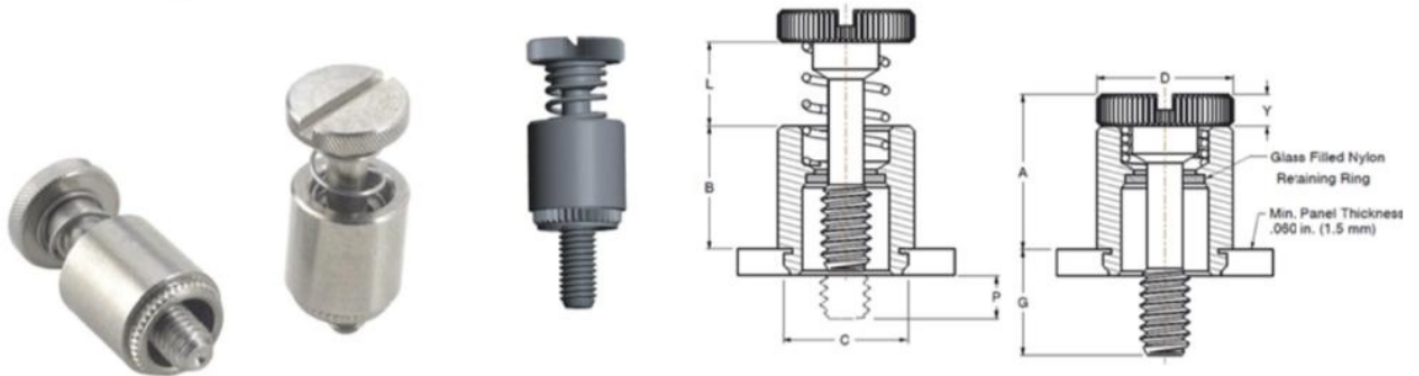
Female standoff with tapping screw.

Tapping screw head allows for easy installation onto existing enclosure boss mount.

M2.3 • M2.6 • M3 • thread in 4~12mm length and M4 thread in 6~20mm length are available.



## Broaching Panel Fasteners



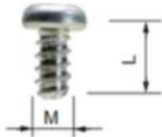
Self Clinching Panel fasteners provide a solution where design engineers want a spring loaded panel fastener assembly to be used in PC Boards so that they are easily assembled, and removable in the assembly.

Available in stainless steel and brass.

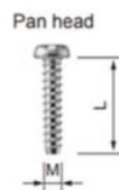
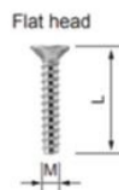


Stainless Steel Captive screw broaching type fasteners panel screw with Thread M3 M5 M6 4-40 10-32 Standoff for sheet metal, Self clinching Standoff

## PCB MOUNTING SCREW

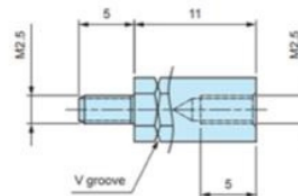


- Self-tapping screws for mounting PCB on bosses or standoffs.
- EM-3-6 self-tapping screws are suitable for mounting 1.6mm or thicker PCB.



- Material : Steel    Finish : Trivalent Chromate    Size : As per customer's specification

## HEXAGONAL SPACER



- Brass hexagonal spacer with M2.5 threads on both male and female sides.
- Material / Finish : Brass / Nickel plated

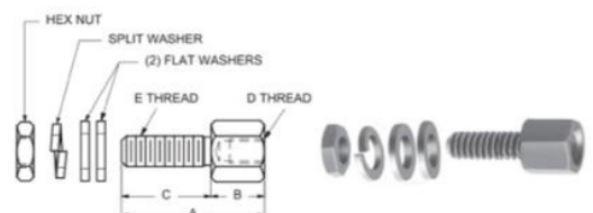
## MOUNTING SCREW



- Material / Finish : Steel / Trivalent chromate



## HEX FEMALE SCREW LOCKS



- Material : Steel, Stainless steel, Brass

# JABC



**+91 9974134555**



**[www.jayashapurabrass.com](http://www.jayashapurabrass.com)**  
**[info@jayashapurabrass.com](mailto:info@jayashapurabrass.com)**



**3034/1 GIDC Phase 3, Dared**  
**Jamnagar - 361004**  
**Gujarat (INDIA)**

**We serve in**





